

Professional Work

Hampton by Hilton

Stansted Airport, Essex, 2017

Project Value: 27 million
Space: 8670 square meter

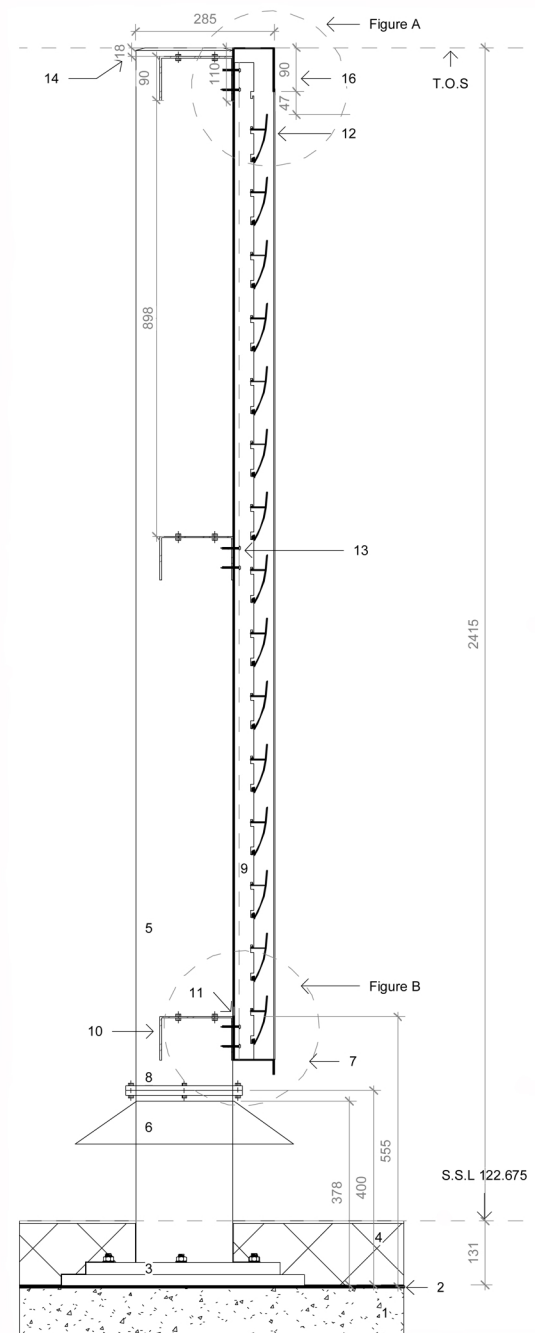
The louvre screen is located around the plant on the roof.
Revit families are modeled to create a 3D model.



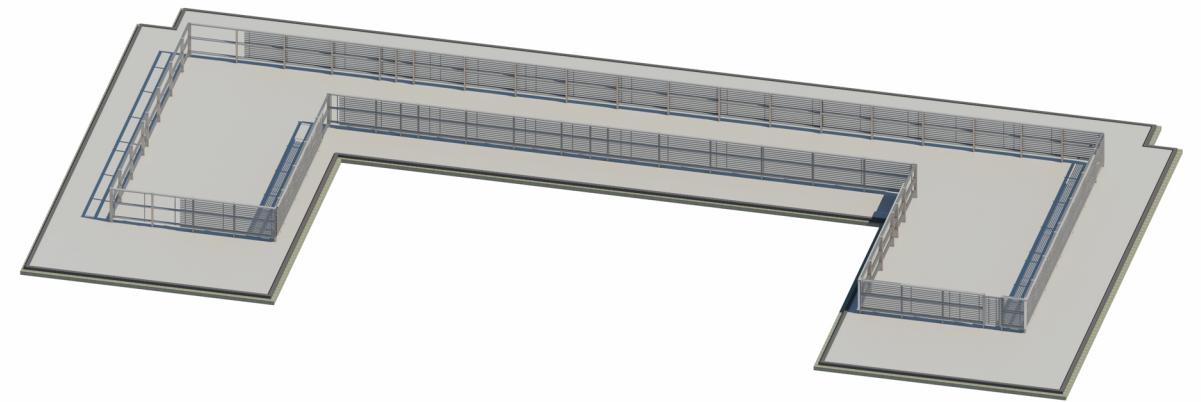
Hampton by Hilton
Photo Courtesy of McAleer and Rushe

Design Detail (right)

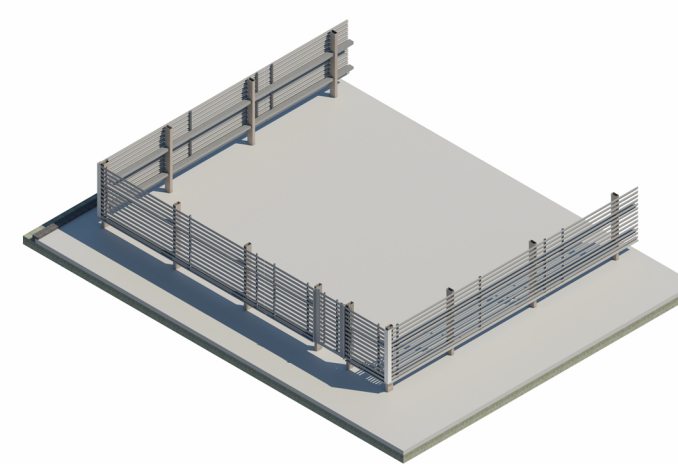
- 1 Reinforced concrete roof slab, 260mm, installed by others
- 2 Thermal break, 5mm thickness, installed by others
- 3 S275 baseplate, 380mm x 250 x 20mm thick with 8mm CFW to RHS & 6 No. M16 (8.8) resin anchor to plate, installed by others
- 4 Insulation and weather proofing to architects detail, min U-value 0.18
- 5 RHS post, 200 x 100 x 5mm at max. 3000mm c/c, galvanised, installed by others
- 6 Weathering Cowl, MS plate approx at 350mm above S.S.L, installed by others
- 7 Greenwood louvre Ltd, cill flashing, PPC aluminium, colour RAL 9007
- 8 Splice connection, 2 No. 340 x 240 x 20mm thick. S275 plates with 8mm CFW to RHS & 6 No. M16 (8.8) through bolts, installed by others
- 9 Greenwood Louvre Ltd, mullion, 40 x 40mm, PPC aluminium. Colour RAL 9007 grey, max horizontal span 3m
- 10 Channel section, 150 x 90 x 3mm. To support louvre screen, galvanised steel, installed by others
- 11 Mastic strip, 1mm, Greenwood Louvre Ltd
- 12 Greenwood Louvre Ltd, louvre blades, C type, 28mm vertical spacing between blades, PPC aluminium, colour RAL 9007 grey, max span 6m. Max 300mm overhang at ends where not fixed
- 13 Fixing bolt, M10, Greenwood Louvre Ltd
- 14 Cap plate to RHS, MS, 5mm thickness, installed by others
- 15 Greenwood Louvre Ltd, vertical flashing, PPC aluminium, colour RAL 9007
- 16 Greenwood Louvre Ltd, parapet louvre flashing, 2mm thickness, 85mm W x 90mm overhang. 110mm edge for fixing to C channel. PPC aluminium, colour Ral 9007 grey



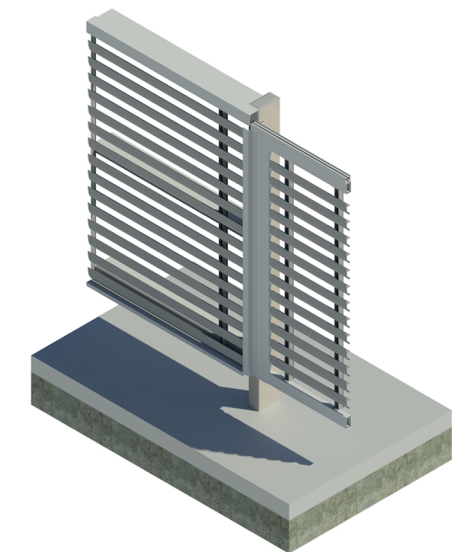
Louvre Section
Scale 1:10
Revit 2017



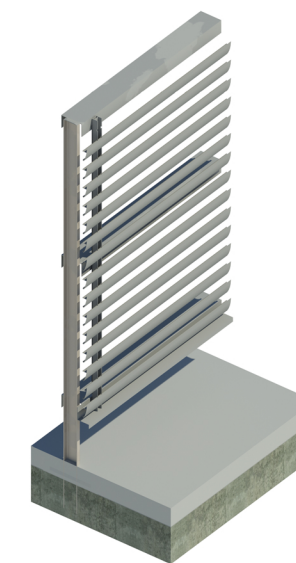
3D Model of Louvre Screen
Revit 2017



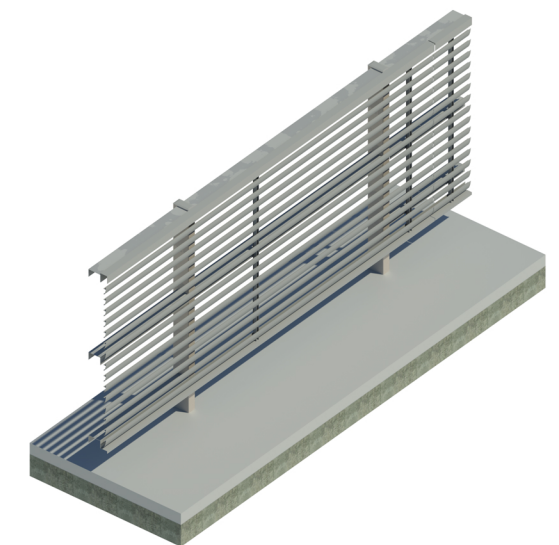
3D Cutaway View
Revit 2017



3D Louvre Door Detail
Revit 2017



3D Vertical Cutaway
Revit 2017



Louvre Screen Detail
Revit 2017